



**EXTRA SLICK**

The smooth waterproof surface lets the water flow quickly away and is easy to clean, thus preventing the formation of putrescible residues.




**STRONG GRIP**

The special geometry of the external structure translates into high steadiness and improves the anchoring of concrete to HD-PE.




**EASY TO CONNECT**

The preassembled drain outlets on the sides and the bottom are easy to open and permit quick connection to the sewer system.



**STACKABLE - EASY TO CARRY**

The special design makes it possible to optimise palletisation, thus taking up less warehouse space and allowing easy carriage and shipping.




**LIGHTWEIGHT**

It is much more lightweight than traditional concrete systems, even when systems with preassembled gratings are to be handled.



**LOW PRICE**

Its very low weight permits easy quick installation. Installation costs are reduced, since no machines are needed to install the system.



**SAFETY**

MufleDrain products undergo strict quality checks in all processing stages. They are all certified EN 1433 and marked CE.



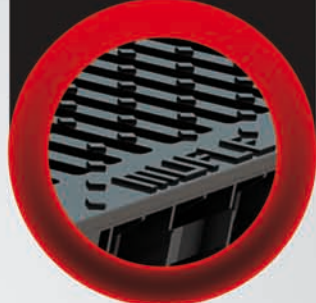
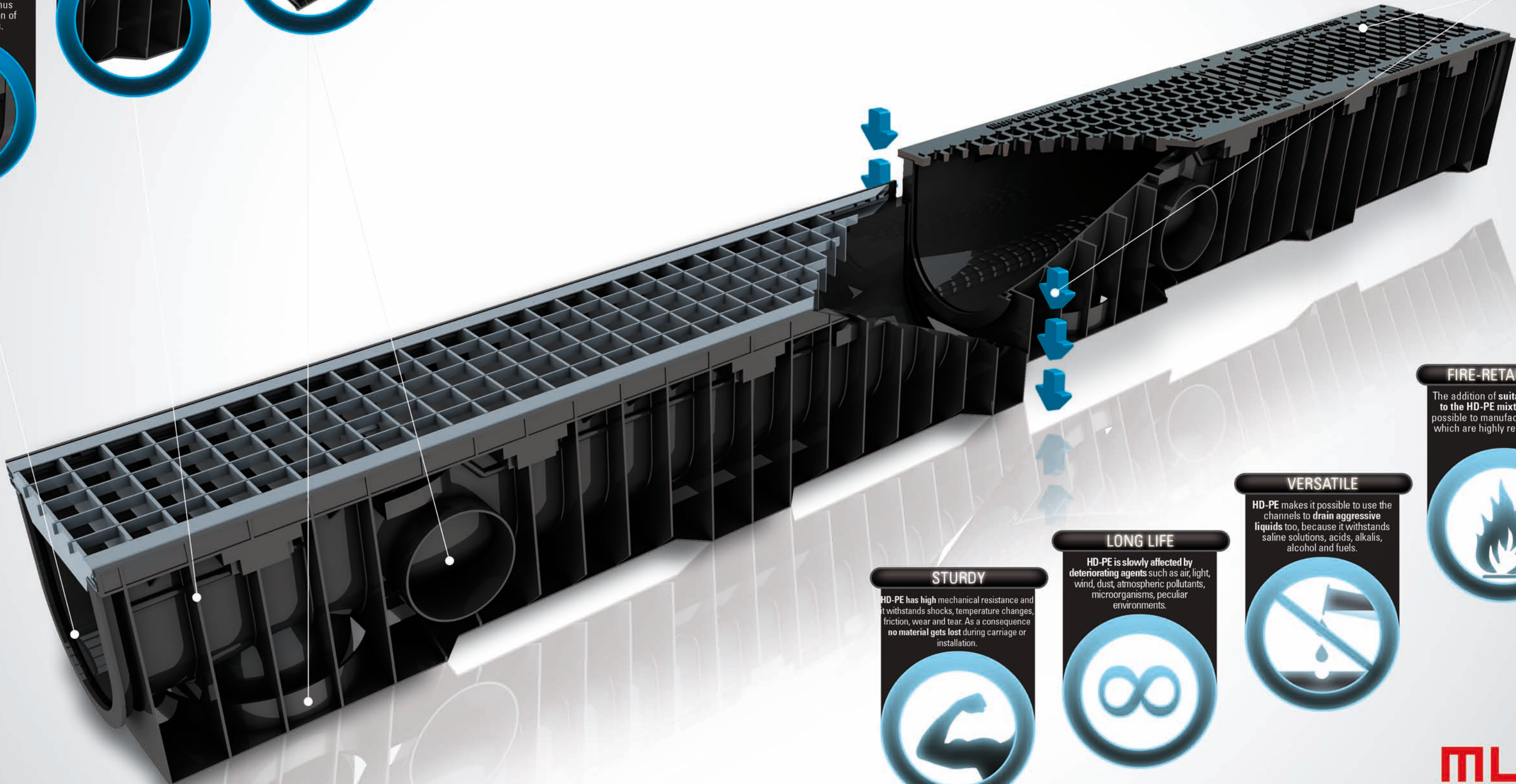
**RECYCLABILITY**

Completely made from recycled HD-PE (which can be recycled again), MufleDrain channels are eco-friendly products par excellence.



**EASY TO ASSEMBLE**

MufleDrain channels can be installed with preassembled gratings through a convenient coupling system!


**STURDY**

HD-PE has high mechanical resistance and it withstands shocks, temperature changes, friction, wear and tear. As a consequence no material gets lost during carriage or installation.



**LONG LIFE**

HD-PE is slowly affected by deteriorating agents such as air, light, wind, dust, atmospheric pollutants, microorganisms, peculiar environments.



**VERSATILE**

HD-PE makes it possible to use the channels to drain aggressive liquids too, because it withstands saline solutions, acids, alkalis, alcohol and fuels.



**FIRE-RETARDANT**

The addition of suitable retarders to the HD-PE mixture makes it possible to manufacture channels which are highly resistant to fire.

