

MUFLE 4STONE

The decorative element that adds character to your drainage

Mufle 4Stone is the new drainage system designed as a real decorative element that will make your outdoor spaces unique. It is not only a drainage system that efficiently collects rainwater, but it also brings a touch of sophistication to the design of your garden, patio, green areas and all your outdoor spaces.

Thanks to its discreet design, it blends perfectly into any environment that requires the use of stones, small pebbles or decorative wood. **Mufle 4Stone** transforms your drainage with colours, shades and textures that reflect your style. You can add a touch of magic to your space by creating rocky areas that make your environment unique and fascinating.

Mufle 4Stone consists of the 4ALL H92 channel and a grating made of galvanized steel or stainless steel AISI 430 that can accommodate decorative stones of your choice to create pleasing geometries and color contrasts between green and surrounding areas.

Be creative with your drainage system!

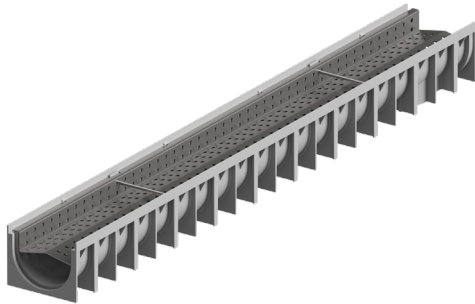


House and Garden, MUFLE 4Stone



MUFLE 4Stone

The decorative element that beautifies your outdoor space



The system is made of two elements:

MUFLE 4ALL H92

PP-PE channel with PP-PE rail

Internal size (WXH): 95X70mm

Available in grey and black

Galvanized steel or Stainless steel AISI 430 grating

Thickness 1,5 mm

Stones: we suggest Ø6mm min



MUFLE 4ALL H92 combined with grating

Inspired by nature, Mufle 4Stone creates a visual balance between spaces while increasing their aesthetic value.

MUFLE 4STONE

The innovative system for outdoor areas where you want to add a touch of design.

- Pedestrian
- Smooth channel surface for rainwater runoff
- Recyclable PP-PE
- Eco-friendly channel
- Resistant to chemicals and corrosion
- Suitable for all types of design



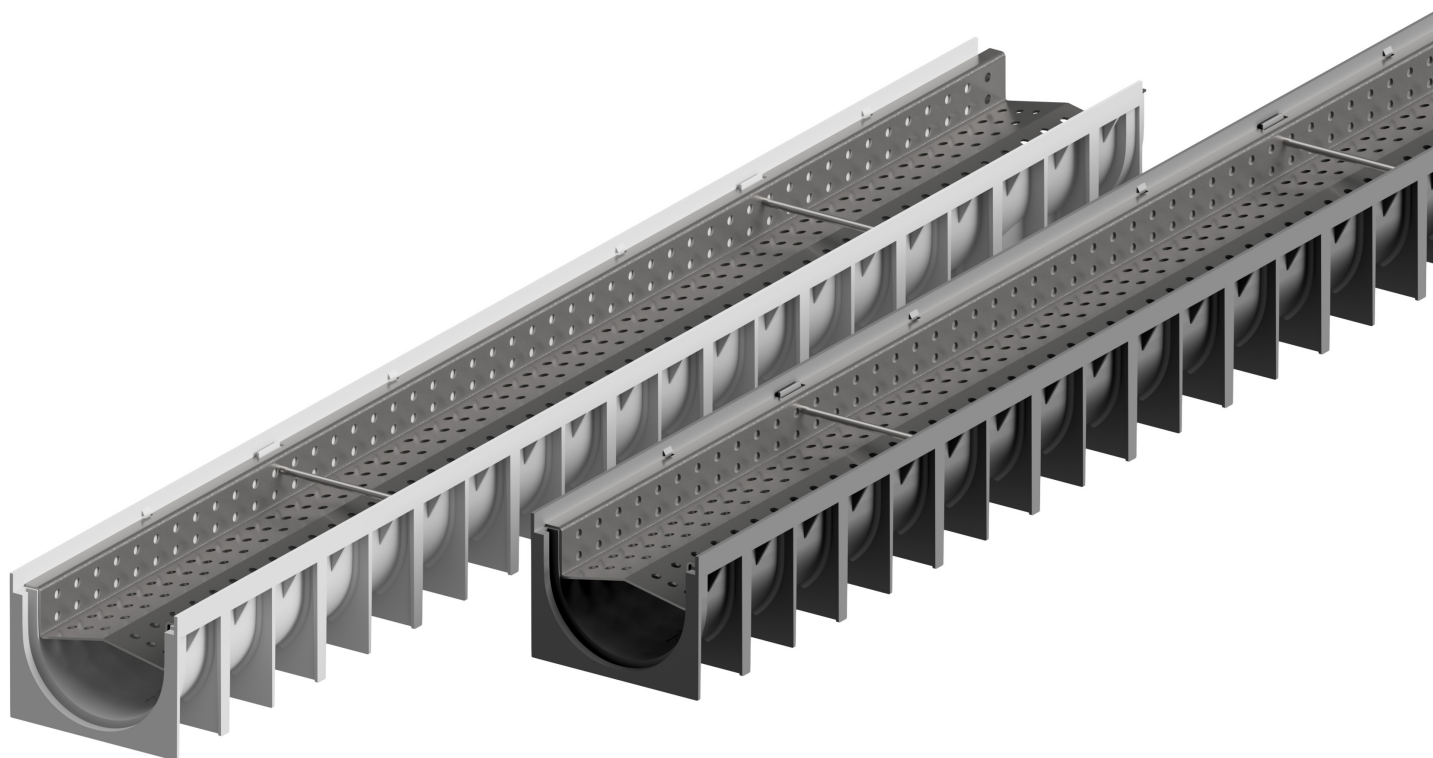
Small or large stones placed in the grating space.

The stones are part of the design of this system. Their geometry creates movement and texture to your outdoor drainage system.



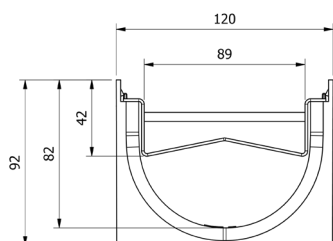
MUFLE 4STONE

The channel that perfectly meets your style and performance requirements.



MUFLE 4STONE Applications

- ...▶ gardens
- ...▶ patios
- ...▶ outdoor spaces
- ...▶ green areas



MUFLE 4ALL H92

Technical information:
Channel internal size (WXH) : 89X92mm
Length: 1000 mm
Total Weight channel and grating: 2,8 kg

MUFLE 4STONE

Our range of PP-PE channels and gratings

