



Mufledrain Element

Rainwater drainage systems

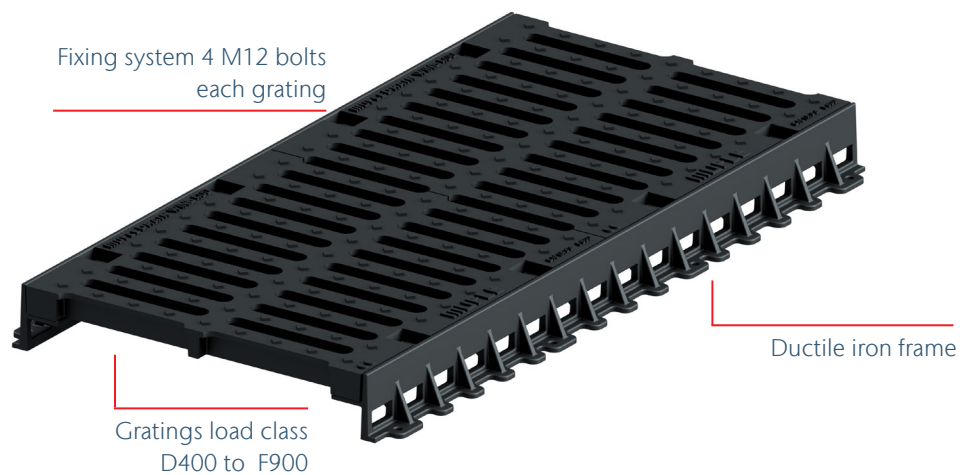
# MUFLE Element: ductile iron frame with gratings

**MUFLE Element** consists of two cast frames connected with gratings from the WING NW300/400 series in load classes D400 to F900.

The connection between frame and grating is ensured by 8 M12 steel bolts per meter.

The grip of the module on the rear-fill concrete is obtained by the presence of large side sections in the frame. The wide surface area ensures that the system is stable and easy to install.

## System overview



## Advantages of the system

- Cast iron frames that are resistant to weather conditions, temperature fluctuations, corrosion, and freeze-thaw cycles
- The system consists of 1 mt long elements and is therefore very light and easy to handle, which greatly simplifies installation
- 0.5-meter gratings with certified loading tests
- The fixing of each grating is ensured by 4 M12 bolts
- Large hydraulic capacity of the gratings; very important parameter for the overall hydraulic balancing



## Installation of MUFLE Element

**MUFLE Element** is delivered assembled and ready for installation.

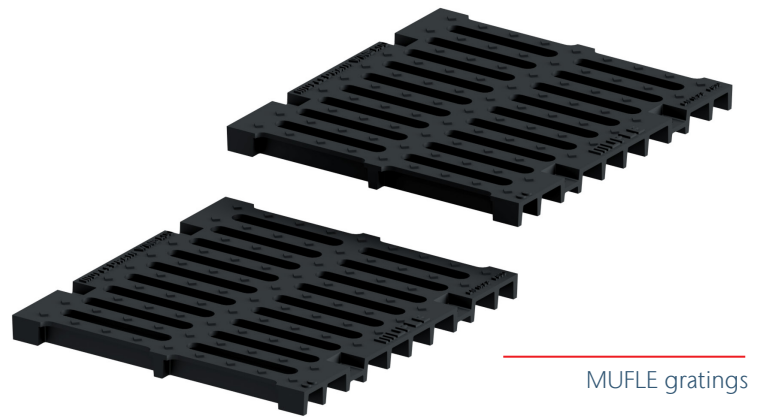
It is recommended to cover the manufactured product with a plastic sheet so that no cement residue is left on its surface during the installation process.

The positioning of the modules is done above the cast-in-place channel by aligning it with the finished paving level.

The concrete used must be of very good quality (a C30/37, X0 according to EN 206-1 is recommended) and laterally must be vibrated to evenly fill the large lateral spaces required to achieve good fill. Once the backfill with concrete is finished, the plastic sheet can be removed.

### Typical applications

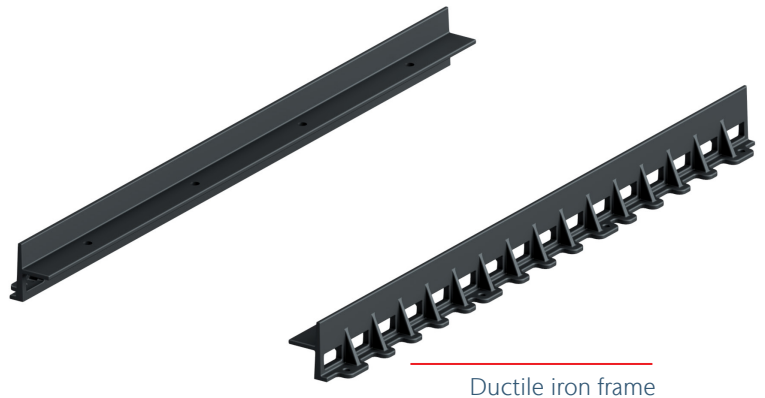
- Airports
- Ports and harbors
- Logistics centers
- Heavy truck parking areas
- Military areas and bases
- Bus terminals



### The MUFLE Element comes pre-assembled and ready to install

Before commencing works, ensure that the correct MUFLE product has been chosen in term of:

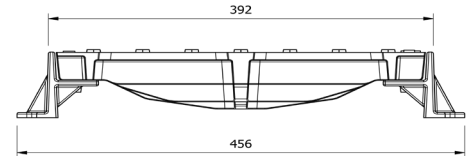
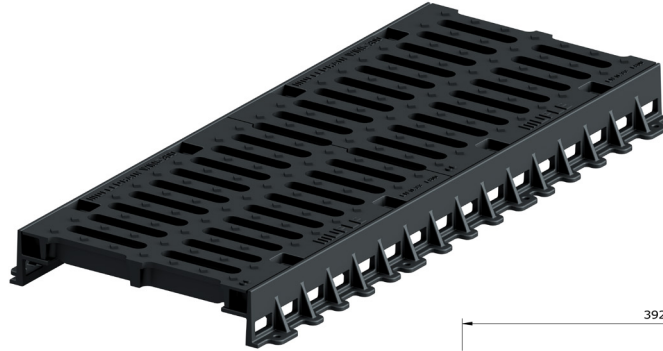
- Clear opening size (measure before ordering)
- Depth
- Loading Class
- Specification (normal, highway or high-max specification)



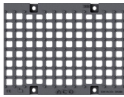
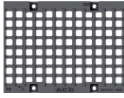
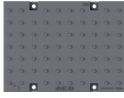
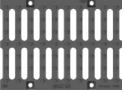
# MUFLE Element 300

## Product information

- Ductile iron frame combined with gratings
- Length of frame 1000 mm
- Load class D400, F900 according to EN 1433
- The fixing of each grating is ensured by 4 M12 bolts
- Dimensions:



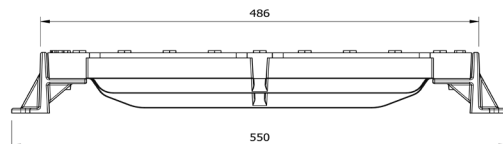
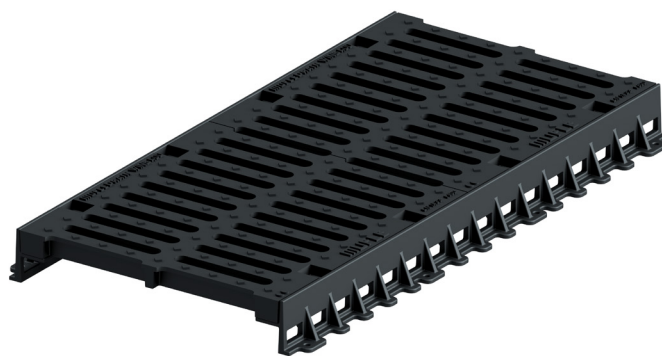
## MUFLE Element 300 combined with gratings

Grating image	Description	Fixing system	Width [mm]	Length [mm]	Slot/mesh [mm]	Weight [kg/pc]	Article number
<b>D 400</b>							
	Ductile iron square mesh	M12 nuts (not included)	376	1000	25 x 25	54,78	540120
<b>E 600</b>							
	Ductile iron square mesh	M12 nuts (not included)	376	1000	25 x 25	64,38	540121
	Ductile iron solid top cover	M12 nuts(not included)	376	1000	-	69,38	540122
<b>F900</b>							
	Ductile iron slot 24	M12nuts (not included)	376	1000	90x 24	72,38	540111

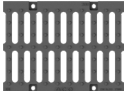
# MUFLE Element 400

## Product information

- Ductile iron frame combined with gratings
- Length of frame 1000 mm
- Load class F900 according to EN 1433
- The fixing of each grating is ensured by 4 M12 bolts
- Dimensions:



## MUFLE Element 400 combined with grating

Grating image	Description	Fixing system	Width [mm]	Length [mm]	Slot/mesh [mm]	Weight [kg/pc]	Article number
	Ductile iron slot 24	M12 nuts (not included)	376	1000	130 x 24	87,78	540104