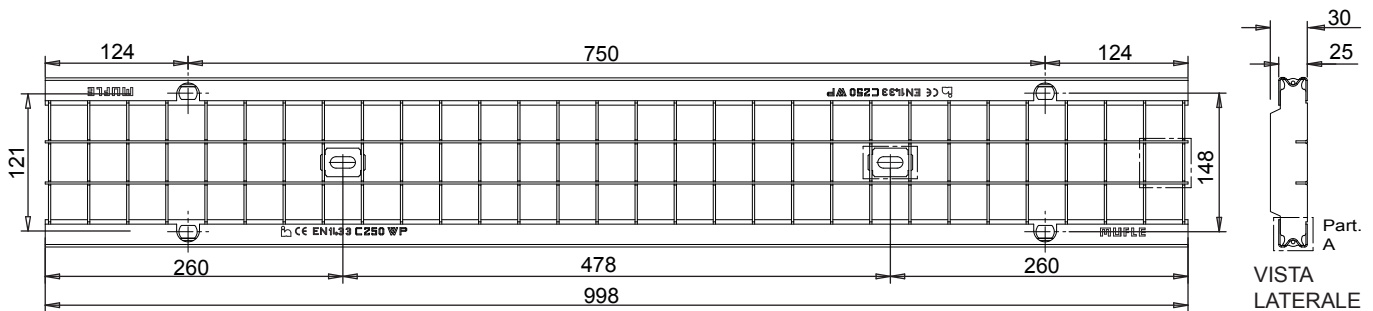


## Griglia a maglia quadra in acciaio zincato o inox WING-PLUS 100 Classe C250\*



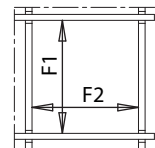
VISTA DALL'ALTO

VISTA  
LATERALE

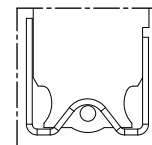
\*Secondo la Norma EN 1433



Particolare  
Piastrino di fissaggio



Particolare  
Maglia  
Quadra



Part. A



Il prodotto deve essere posto in opera secondo le specifiche della MufleSystem s.r.l., le istruzioni sono disponibili sul nostro sito internet

## Scheda tecnica

### Dimensioni e caratteristiche

NB: Le dimensioni ed i pesi sono soggetti alle normali tolleranze di fabbricazione

Lunghezza (mm)	998
Larghezza esterna (mm)	148
Altezza (mm)	25
Ingombro (mm)	30
Dimensioni aperture (mm) (F1xF2)	31.2 x 34.2
Materiale	Acciaio S235JR (Fe 360B) / AISI304
Peso (Kg)	4.80
Superficie di drenaggio (dm <sup>2</sup> )	9.38
Sistema di fissaggio	Vite o Barretta
Finitura superficiale	Zincatura / -
Resistenza (Norma UNI EN 1433)	Classe C250

### Applicazioni Zincato

Aree di sosta e di accesso a parcheggi multipiano  
Bordo strada

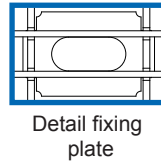
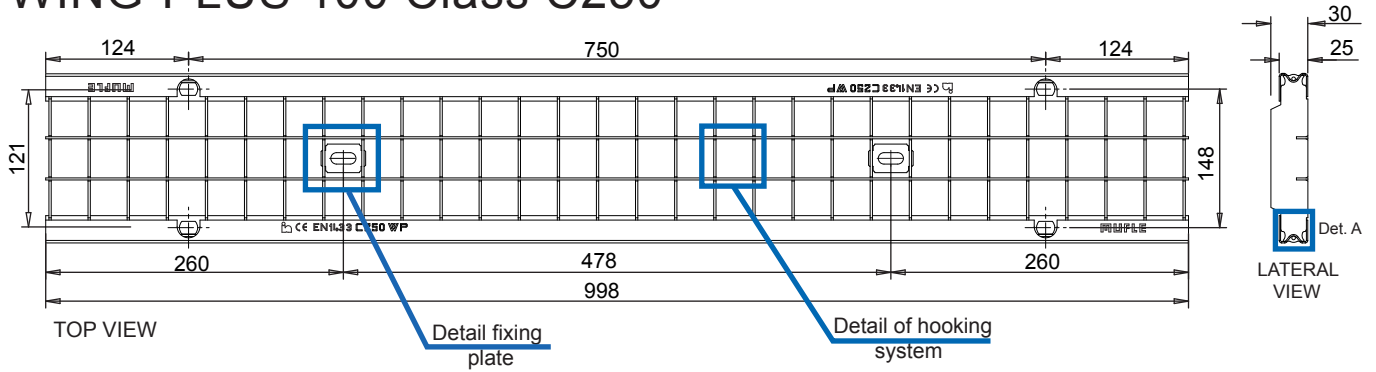
### Applicazioni Inox

Aree di sosta e di accesso a parcheggi multipiano  
Canalizzazione bordo strada  
Industrie alimentari  
Ambienti chimicamente aggressivi

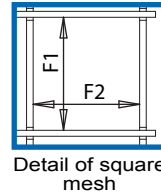
### Abbinabili a canalette

Wing 100/160	Plus 100/160
Wing 100/100	Plus 100/100
Wing 100/80	Plus 100/80
Wing 100/55	Plus 100/55

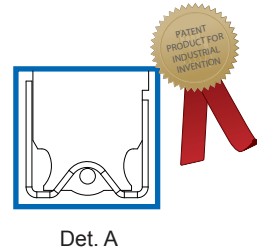
### Square mesh grating in galvanized stainless and steel WING-PLUS 100 Class C250\*



Detail fixing plate



Detail of square mesh



Det. A

\*In accordance to the norm EN 1433

The product have to be installed according to Muflesystem's specifications (available on our web site)

## Data Sheet

### Dimension and feautures

NB: Le dimensioni ed i pesi sono soggetti alle normali tolleranze di fabbricazione

Length(mm)	998
Total width (mm)	148
Total height (mm)	25
Depth (mm)	30
Slot height (F1x F2)	31.2 X 34.2
Material	Galvanized Steel DX51D/Stainless steel AISI 304
Weight (Kg)	4.80
Draining surface (dm <sup>2</sup> )	9.38
Fixing system	Tie-rod/Nut
Surface finishing	Galvanization / ***
Resistance (Norm UNI EN 1433)	C250

### Application

Galvanized steel	Stainless steel
Kerbs	Kerbs
Historical town centres (slow traffic)	Historical town centres (slow traffic)
Parking areas	Parking areas
Parking decks	Parking decks
	Areas with low-loadv transit in food factories
	Areas with low-load transit in chemically aggressive environments

### For channel

Wing 100/160	Plus 100/160
Wing 100/100	Plus 100/100
Wing 100/80	Plus 100/80
Wing 100/55	Plus 100/55