

# MUFLEDRAIN

## PLUS

**MUFLE**  
SISTEMI DI DRENAGGIO ACQUA



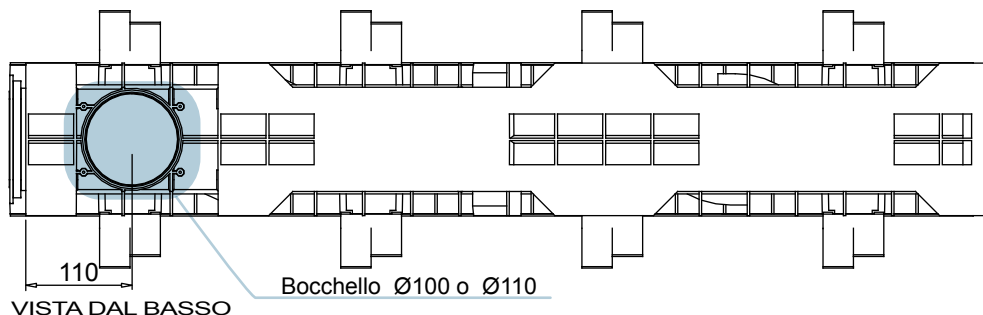
IGQ P026  
UNI EN 1433



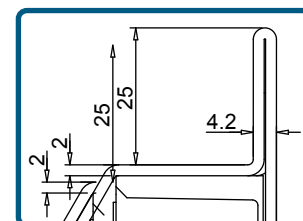
Codice prodotto  
704002  
704010 (inox)

rev. 00

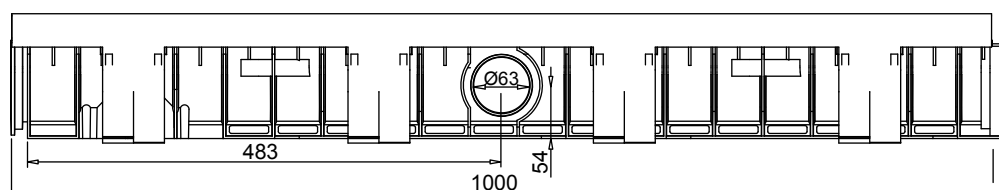
## Canaletta in PE-HD PLUS 100/80 con telaio in acciaio zincato (o inox)



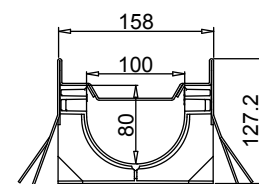
VISTA DAL BASSO



PART. SEZIONE



VISTA LATERALE



SEZIONE

Tenuta all'acqua: per assicurare la tenuta stagna delle canalette, si consiglia l'utilizzo di un adesivo sigillante bituminoso. A garanzia completa e duratura dell'assenza di perdite attraverso i giunti delle canalette, si può provvedere alla saldatura a caldo dei giunti stessi.

## Scheda tecnica

### Dimensioni e caratteristiche

NB: Le dimensioni ed i pesi sono soggetti alle normali tolleranze di fabbricazione

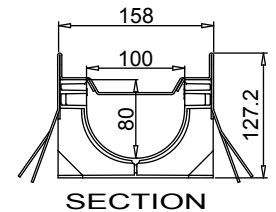
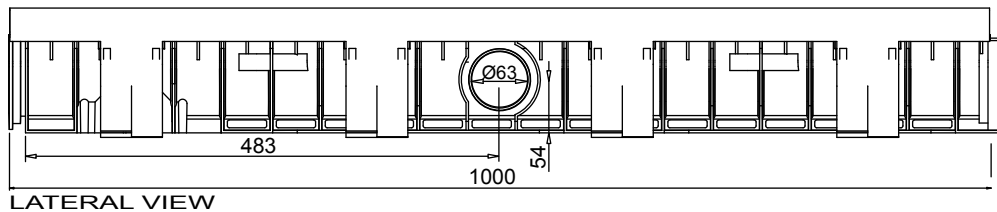
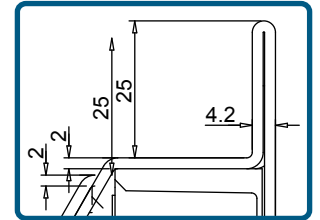
|                                         |                                       |
|-----------------------------------------|---------------------------------------|
| Lunghezza (mm)                          | 1000                                  |
| Larghezza esterna (mm)                  | 158                                   |
| Altezza esterna (mm)                    | 127                                   |
| Luce interna (mm)                       | 100                                   |
| Altezza interna (mm)                    | 80                                    |
| Scarichi                                | 1 x Ø100*/Ø110* e 2 x Ø63             |
| Materiale canaletta                     | PE-HD                                 |
| Materiale telaio                        | Acciaio zincato (inox) (spessore 2mm) |
| Peso (Kg)                               | 5.35                                  |
| Sezione di drenaggio (cm <sup>2</sup> ) | 69.28                                 |
| Capacità (dm <sup>3</sup> = litri)      | 6.92                                  |

\*Per ottenere lo scarico occorre utilizzare il Kit Bocchello con uscita (disponibile nelle due versioni da Ø100 o Ø110).

## Griglie

|                        |                          |                            |
|------------------------|--------------------------|----------------------------|
| Maglia quadra 30x30    | in acciaio zincato, inox | Classe C250                |
| Maglia antitacco 30x10 | in acciaio zincato, inox | Classe C250                |
| Fessura 20 mm          | in ghisa sferoidale      | Classe C250-D400-E600-F900 |
| Maglia quadra          | in ghisa sferoidale      | Classe D400                |
| Fessura 6 mm           | in ghisa sferoidale      | Classe E600                |
| Copertura cieca        | in acciaio zincato       | Classe C250                |
| Copertura cieca        | in ghisa sferoidale      | Classe E600                |

## Channel in HD-PE PLUS 100/80 NEW with galvanized or stainless steel edge



### New.

1. The new mufledrain channels can also be joined together with the gratings/covers already installed on in order to reduce installation times.
2. The new mufledrain channels have new fixing-to-channels systems, as the inner side HD-PE pins and the unreleased quick fastener clips, for an easy and safe gratings installation.
3. The inner surface guarantees an high roughness index and do not have any external passing hole in order to avoid and water infiltration.

Watertight: To ensure the watertight of the channels, it is advisable to use an adhesive bituminous sealing. As a complete and long lasting guarantee of absence of leakages through the joints of the channels, it is possible to hot-solder the joints

## Data Sheet

### Dimensions and features

N.B. Dimensions and weights are subjected to the normal tolerances of the manufacturing

|                                     |                                               |
|-------------------------------------|-----------------------------------------------|
| Length (mm)                         | 1000                                          |
| External width (mm)                 | 158                                           |
| External high (mm)                  | 127                                           |
| Internal width (mm)                 | 100                                           |
| Internal high (mm)                  | 80                                            |
| Outlets                             | 1 x Ø100*/Ø110* - 2 x Ø63                     |
| Material                            | HD-PE                                         |
| Edge Material                       | Galvanized or stainless steel (thickness 2mm) |
| Weight (Kg)                         | 5.35                                          |
| Drainage section (cm <sup>2</sup> ) | 69.28                                         |
| Capacity (dm <sup>3</sup> = litres) | 6.92                                          |

\*For drainage purposes use the drain gate with outlet kit (available in two versions Ø100 and Ø110).

## Gratings

|              |                             |                           |
|--------------|-----------------------------|---------------------------|
| Mesh 30x30   | galvanized, stainless steel | Class C250                |
| Mesh 30x10   | galvanized, stainless steel | Class C250                |
| Slot 20 mm   | ductile iron                | Class C250-D400-E600-F900 |
| Mesh quadra  | ductile iron                | Class D400                |
| Fessura 6 mm | ductile iron                | Class E600                |
| Closed cover | galvanized, stainless steel | Class C250                |
| Closed cover | ductile iron                | Class E600                |

The products have to be installed according to MufleSystem's specifications (available on our web site)